

# SAVE OUR SEWER SYSTEM FROM “FLUSHABLE” WIPES

“Flushable” wipes are a growing hazard to public health, causing sewer backups and overflows. These so-called “flushable” wipes are not biodegradable!

## THEY CLOG OUR PIPES

Don't flush wipes or other items that can clog pipes in your home, the sewer system, pump stations and equipment at the Water Resources Recovery Facility (WRRF).

Clogged pipes can lead to overflowing toilets and basement sewer backups. When this happens, you'll need to call a plumber to clear the blockage.



## NEVER FLUSH

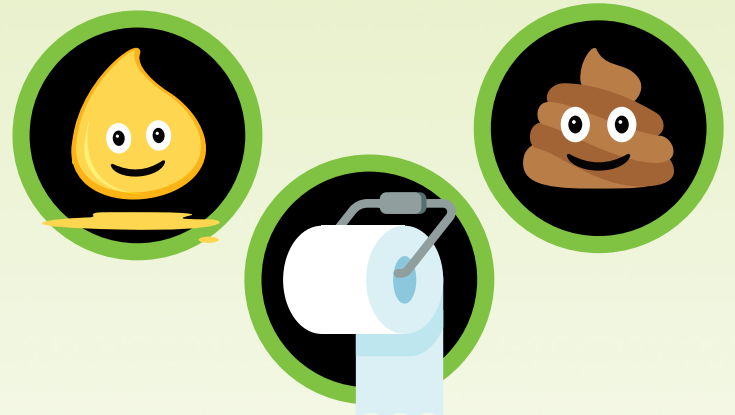
- Baby wipes or cleaning wipes
- Tampons and sanitary products
- Condoms
- Tissues
- Paper towels
- Dental floss
- Cotton balls and swabs
- Cat litter
- Prescription drugs
- Over-the-counter medicines
- Cigarette butts



Member Outreach

## STICK TO THE 3 Ps

Only three things go in your toilet: pee, poo and (toilet) paper! If you really want to use wipes, throw them in the garbage, not your toilet.



## A COSTLY MAINTENANCE MESS

“Flushable” wipes wreak havoc in sewer systems across the region. In 2018, workers in Macomb County removed a 19-ton, 100-foot fatberg, a deposit of fat and grease, mixed with wipes. The process cost about \$100,000.



Used “flushable” wipes and other items removed from a sewer in Clinton Township by the Macomb County Public Works Office.